



SLIDING DOOR

SYSTEM RT7050



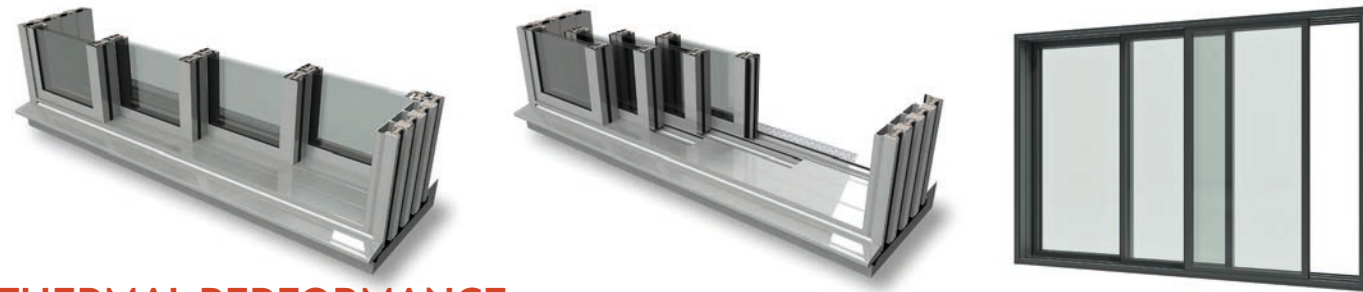
SLIDING DOOR

System RT7050



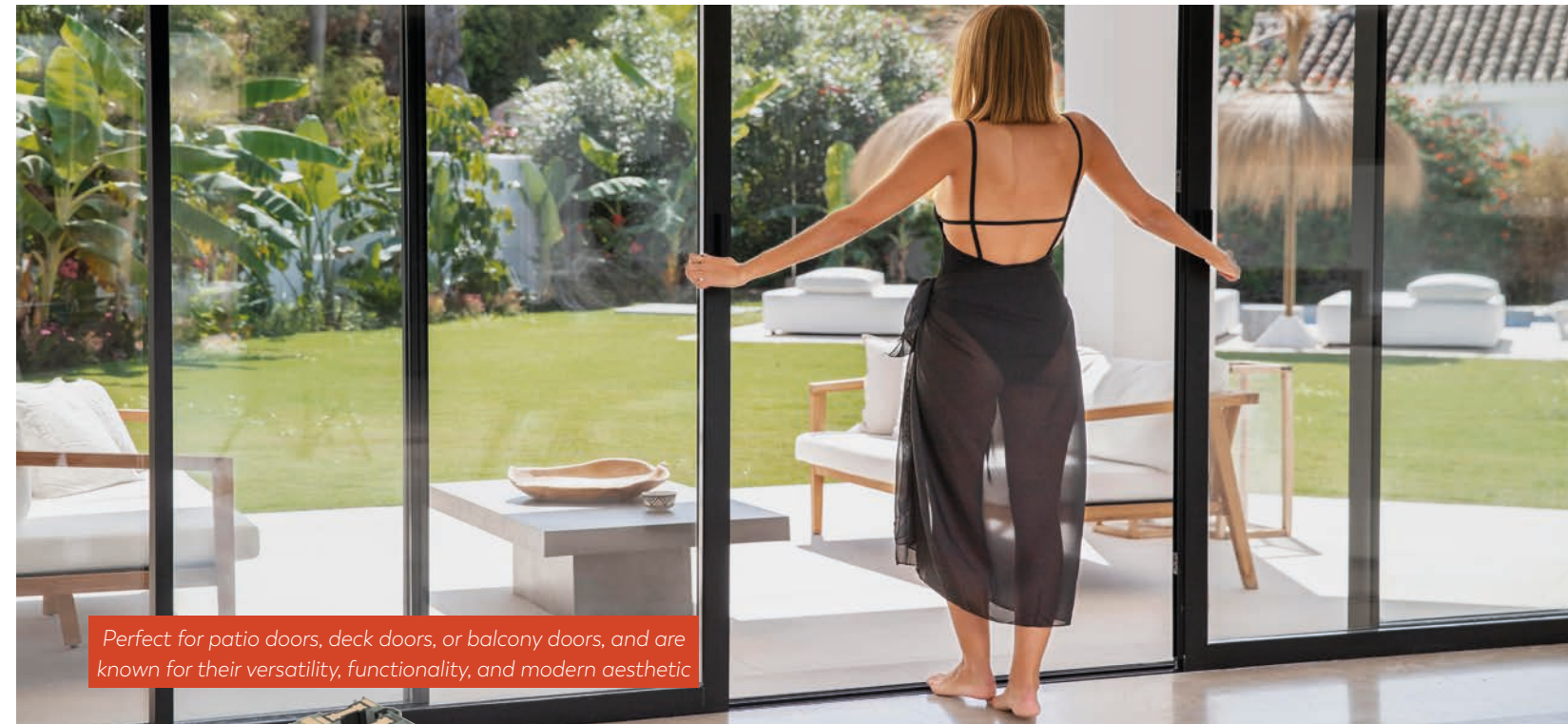
Choosing a multi-panel sliding door from Rhino Windows gives you choice, with fantastic thermal efficiency in whichever system or material you choose. Sliding Doors are renowned for accommodating large panels, which result in wide openings with unobstructed views, and allowing maximum natural light. Multi-panel Sliding Doors are also known for their smooth and easy operation with panels gliding along the tracks effortlessly. They can be opened partially or fully, providing flexibility in terms of ventilation and easy access to outdoor spaces. They are also space-saving, as they do not require swing space like traditional hinged doors, making them ideal for areas with limited space.

Sliding Doors are available with dual, triple & quad tracks (depending on required configuration).



THERMAL PERFORMANCE

Rhino Window's Sliding Door range, in conjunction with the correct glass specification (and optional foam filling), is designed to achieve (and vastly surpass in some cases) compliance with the latest thermal requirements of the current building regulations. All Sliding Door include **Winsul8 Insulated Core Technology** to minimise heat transfer across the profiles. This innovative and advanced thermal core provides the basis of all **Rhinotrusion** systems thermal success.



Perfect for patio doors, deck doors, or balcony doors, and are known for their versatility, functionality, and modern aesthetic

WINSUL8 TECHNOLOGY - INSULATED CORE SYSTEM

A **GFRC THERMALLY INSULATED CORE** IS LOCATED AT THE VERY CENTRE OF ALL THE RT SYSTEMS, ENABLING FANTASTIC U-VALUES AND STRENGTH. **ECOTRUSION & ULTRA-ECOTRUSION** SYSTEMS TAKE THIS A STEP FURTHER BEING COMPLETELY CONSTRUCTED FROM GFRC.

Thermal performance is further gained if opting to choose for the profiles to be foam filled. The foam insulation reduces radiation heat loss across the air cavities within the door profiles to provide additional thermal enhancement.

Triple Glazed Sliding Doors

Transmission Coefficient (U-Value/U-Factor) **0.9-1.1** w/m2k / **0.15-0.19** Btu/h·ft²·°F
 Glass Centre pane (U-Value/U-Factor) **0.67** w/m2k / **0.12** Btu/h·ft²·°F

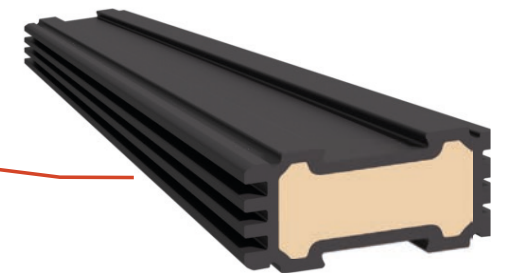
Double Glazed Sliding Doors

Transmission Coefficient (U-Value/U-Factor) **1.1-1.3** w/m2k / **0.19-0.23** Btu/h·ft²·°F
 Glass Centre pane (U-Value/U-Factor) **1.07** w/m2k / **0.19** Btu/h·ft²·°F

At the time of publication the RT7550, RT9050, RT7540 & 9040 systems were pending thermal test results.



RT7050 WW
Multi-Slider
system
(4 track)



Winsul8 Insulated Core
GFRC; warmer, larger, thermal breaks within all profiles
Foam filled option

Foam Filled Cavities
Option of adding insulating foam to cavities (frame, sash & thermal core) for Improved thermal efficiency of @9%

SLIDING DOOR

System RT7050



RT7050 Classic *Ideal 70mm replacement system*

Material options: Aluminium (AA), Hardwood (WW) & Aluminium/Hardwood (AW).

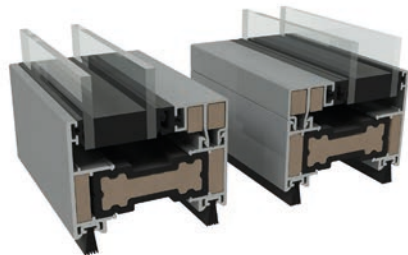
The RT7050 system offers Sliding Doors in 3 material options, all include Winsul8 Technology, produce great thermal values, and have matching profiles across both Bifolds and Sliding Doors.



RT7050 AA
ALUMINIUM

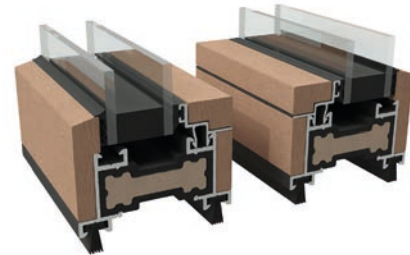
RT7050 WW
WOOD

RT7050 AW
ALUMINIUM & WOOD



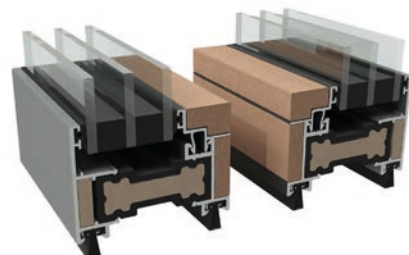
U-Value
1.28
W/m²k, double glazed

U-Factor
0.23
Btu/h-ft²-°F, double glazed



U-Value
1.29
W/m²k, double glazed

U-Factor
0.23
Btu/h-ft²-°F, double glazed



U-Value
0.88
W/m²k, triple glazed

U-Factor
0.15
Btu/h-ft²-°F, triple glazed

Features: 70mm deep, 50mm slim frame (sight-line). Great thermal values, Ideal replacement system. Includes **Winsul8 Technology** (GFRC Insulated 51mm core) to profiles and aluminium tracks. Wide glazing panels, smooth action, easy to use. Flush external aluminium face. Secure Multipoint locking. The Hardwood WW material option can be used within Conservation and Heritage Areas.

Track options: Available as **Dual** (2), **Triple** (3) and **Quad** (4) track versions.

Threshold options: Flush, raised, with or without cills, with or without rebates.

Further options: Double or Triple Glazing. Laminated units. Transoms. 75mm Cill. Pocket door.

Profile / Track specification:

Sash Depth (each) **70mm / 2 3/4 in**
Sash Width **50mm / 1 31/32 in**
Jamb Width **35mm / 1 3/8 in**

Interlock Profile **50mm / 1 31/32 in**
Double Track (Depth) ... **170mm / 6 11/16 in**
Triple Track (Depth) **235mm / 9 1/4 in**
Quad Track (Depth) ... **320mm / 12 19/32 in**



Security

Multipoint locking
Secure roller system
Security tested
Toughened glass

U-Value
0.88
W/m²k, triple glazed

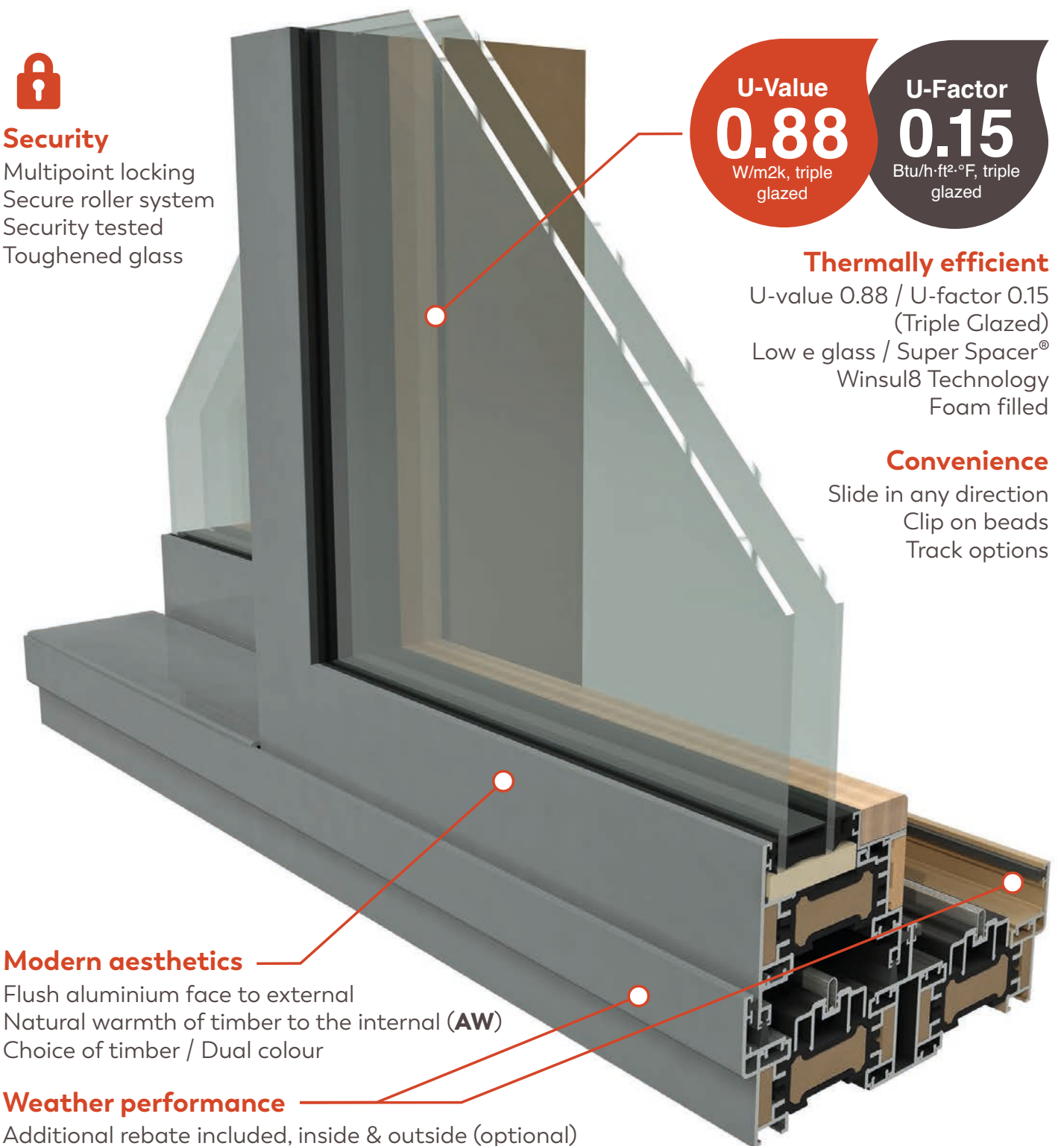
U-Factor
0.15
Btu/h-ft²-°F, triple glazed

Thermally efficient

U-value 0.88 / U-factor 0.15
(Triple Glazed)
Low e glass / Super Spacer®
Winsul8 Technology
Foam filled

Convenience

Slide in any direction
Clip on beads
Track options



Modern aesthetics

Flush aluminium face to external
Natural warmth of timber to the internal (AW)
Choice of timber / Dual colour

Weather performance

Additional rebate included, inside & outside (optional)
High performance seals / gaskets
Weather head drip bars

RT7050 AW Classic profile.
Raised double track fitted with
both internal & external rebates.

SLIDING DOOR FEATURES

System RT7050

Common Features

- Available in single or dual colour standard RAL finish(es)
- Available in double or triple glazing
- Double, triple or quad track options
- Available as pocket & corner door sets
- Optional foam filled cavities
- Modern aesthetics. Smooth action, easy to use
- Hardware; Handles & rollers
- Fast fit glazing beads, inc. thermal break
- Rebates; external and internal
- Trickle vents. Cill options
- Security; Multipoint locking, Secure roller system

Glass; Toughened Low-E Argon gas filled glazing units, includes Super Spacer® bars. Glass optional; Krypton gas filled, laminated, anti-sun tinting, turtle glass.



Size Limitations

Max opening height **4000mm / 13ft**
 Max opening width **18300mm / 60ft**
 Panel height .. **990mm/39in - 2500mm / 98in**
 Panel width ... **990mm/39in - 2500mm / 98in**
 Maximum weight/sash **120 kg / 265 lb**

† Some height configurations may require the addition of a mid rail, / and or upgrade to 6mm laminated glass for extra safety & support.

Construction

Stronger build quality / improved robustness. Each sash corner is reinforced with dual aluminium corner cleats and 4x wedge pins per cleat. This creates a far superior and stronger system, and increases longevity. This is the same for all products in all material options

Configurations

Sliding Doors range from a single sliding panel with a fixed unit to 14 sliding panels both ways. Corner door sets and pocket doors are available. Double, triple and quad track options enable multiple panel stacking / configuration

Door Energy Rating

Rhino Window's RT Systems has been assessed by an independent simulation specialist in accordance with BS EN ISO 10077-2:2017, using official Door Energy Rating software, and has been proven to be capable of achieving an 'A+' rating.



Easy to operate, smooth action, robust construction.

Material Options

Aluminium profiles (1.8mm / 5/16 in) are extruded from aluminium alloy 6060T6, T5 or T4 complying with the recommendations of BS EN 12020-2/BS EN 755-Parts 1 to 9. **GFRC** RT750/9040 and thermal breaks are produced from glass fibre reinforced composite. **Wood** Environmentally sourced European Oak or Eucalyptus (standard), or can bespoke specify exact wood species preference.

Finishes

Our Sliding Doors are available in a range or mix of material options, and can be provided in either of the following finishes:
Aluminium; 1. Anodised to BS EN 12373-1 or BS 3987 2. Powder coated to BS EN 12206-1 Available in single or dual colour standard RAL finishes. 3. Special finishes can be requested.
Glass; 1. Clear 2. Glass tint 3. Available in single or dual colour standard RAL finishes.

Wood; 1. Unfinished natural timber 2. Painted. Available in single or dual colour standard RAL finishes. 3. Natural stain (breathable). Special finishes can be requested.
GFRC; 1. Powder coated to BS EN 12206-1 or automotive spray painted. Available in single or dual colour standard RAL finishes. 2. Special finishes can be requested.

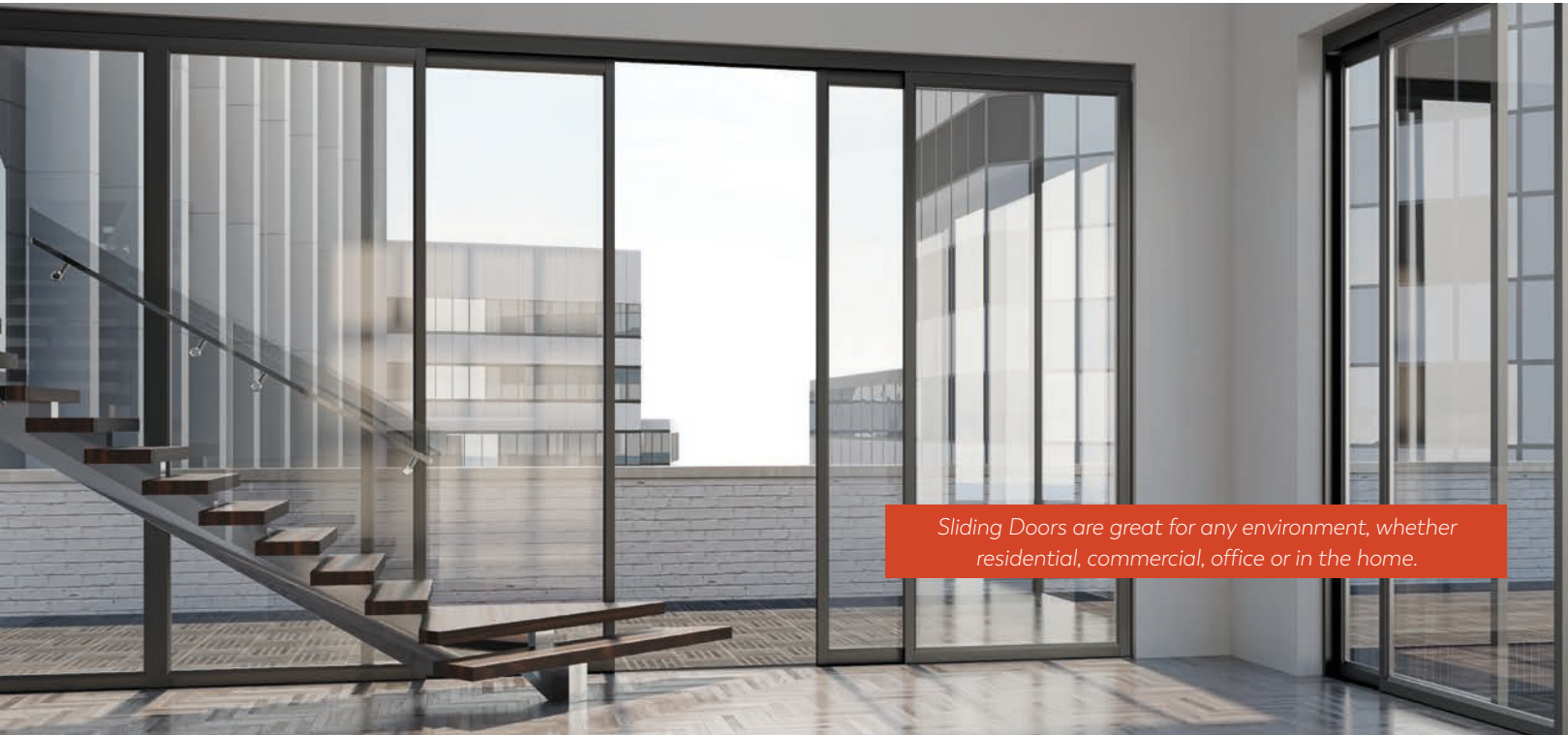


Stock Colours (Aluminium)

Powder coated; 9016 Traffic White (Satin), 9005 Jet Black (Matt), 7016 Anthracite Grey (Matt).

SLIDING DOOR

System RT7050



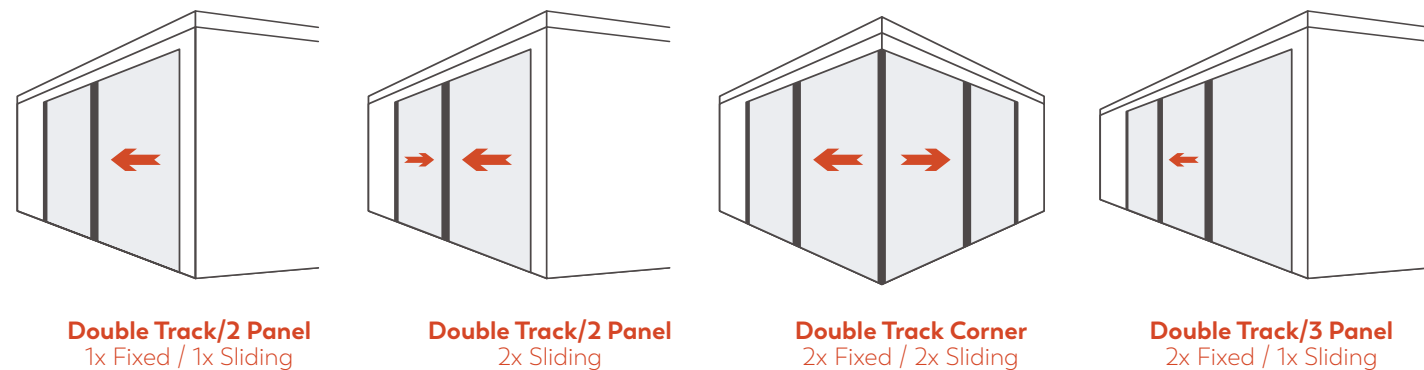
Sliding Doors are great for any environment, whether residential, commercial, office or in the home.

Material Options

One of the biggest advantages of the Rhino Window 'Multi-panel Sliding Door' is the material options available. We have seven options across the different systems, eight if we include our Hardwood having an aluminium trim option. Hardwood (**WW**) can also be used in Heritage areas.

Opening Possibilities

Another great advantages is the amount of opening configurations you can choose, made possible by the track options available. Rhino Windows offer a choice of; **double, triple** and **quad** tracks allowing for an unprecedented number of opening possibilities. We have illustrated a few popular **double track options below** ranging from 2 to 6 panels ...



Threshold Options

Sliding Doors are available with a low threshold, raised, rebated and with or without a cill.

Level Track

This options gives an almost flush floor level, seamless transition from the inside of the property to the outside of the property.

- Compliant, Part M (UK) / ADA (USA)
- Extremely strong, a car can run over it to gain access to a garage

Raised Track

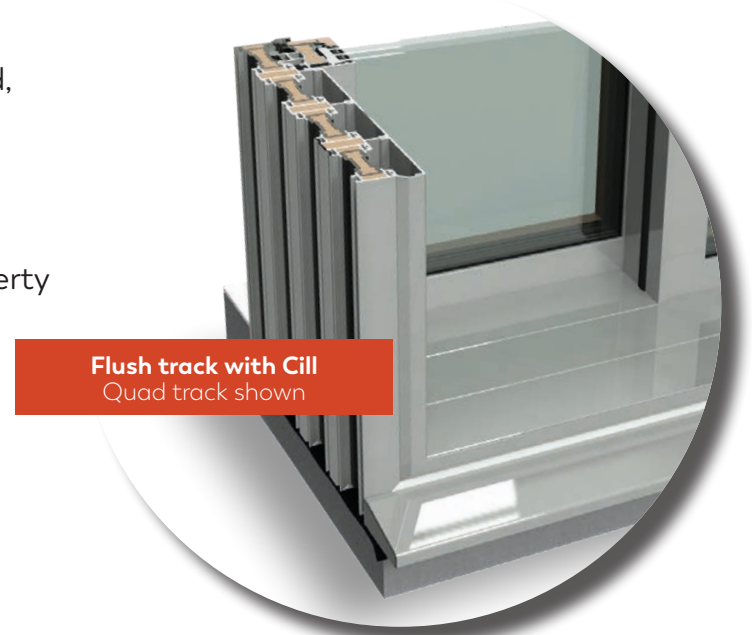
Requires user to step over the threshold.

Flush Track with Cill

This option offers a step down out of your property with no trip hazard, and with a cill to drain water away from the doors.

Raised Track with Cill

Offers a step down out of your property, with a cill to drain water away from the doors.



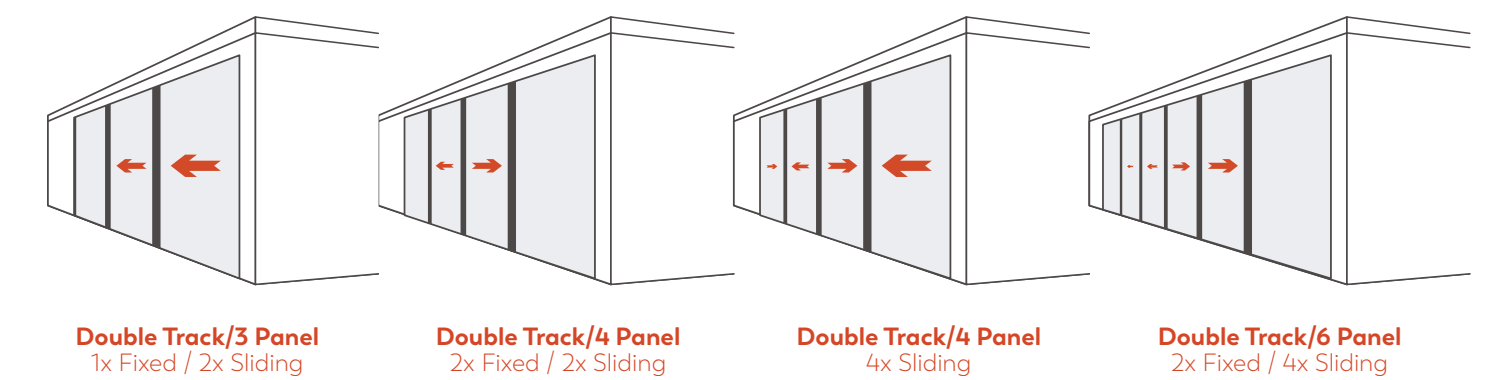
Flush track with Cill
Quad track shown



Raised track without Cill
Double track shown



Flush track
Double track shown



SLIDING DOOR

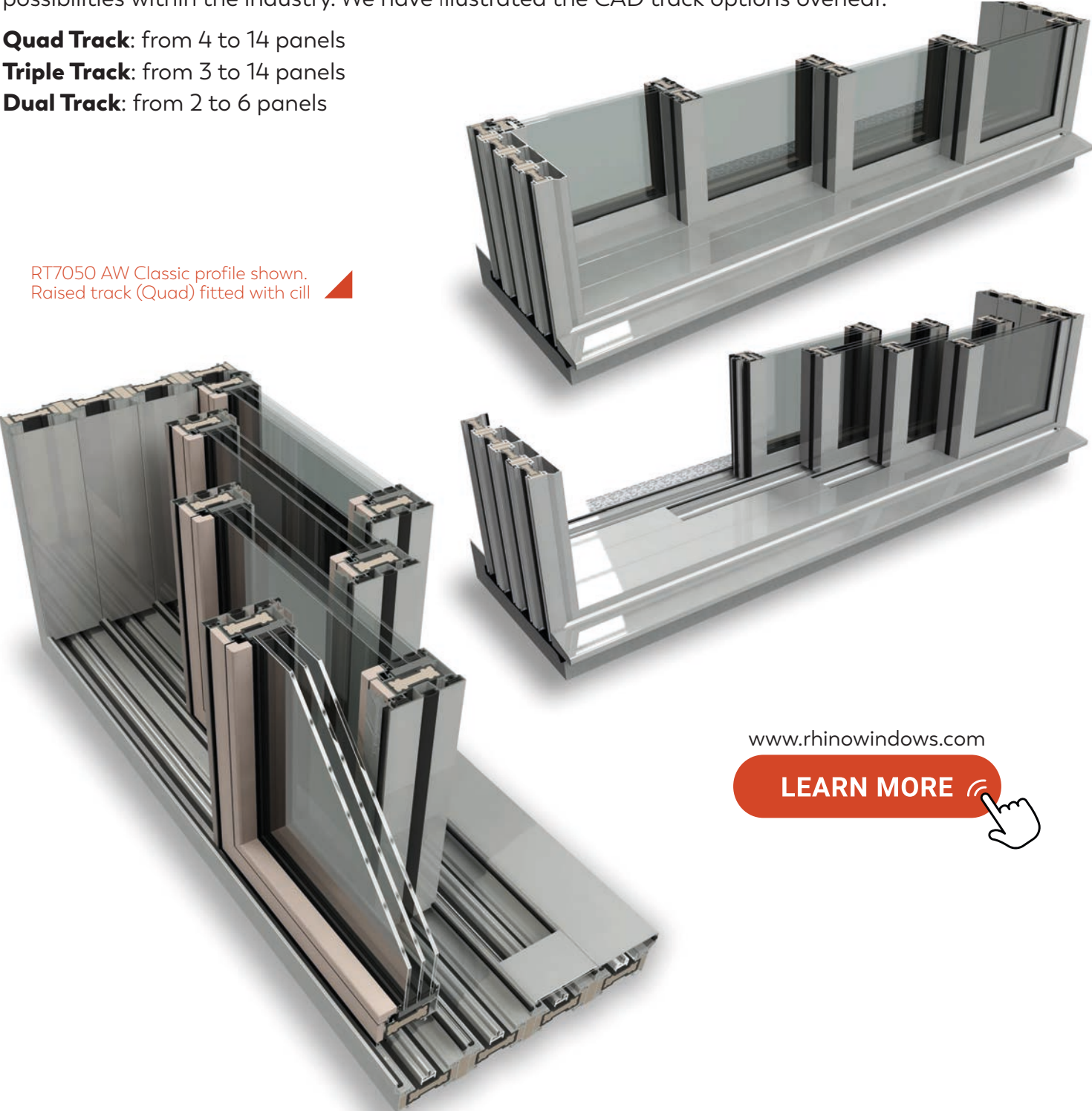
System RT7050

Track Options

Another great advantage with Rhino Windows is the track options available, with the **quad track being an industry first!** Rhino Windows offer a choice of; **dual, triple** and **quad** tracks across all the Multi Sliding Door systems, allowing for an unprecedented number of opening/sliding possibilities within the industry. We have illustrated the CAD track options overleaf.

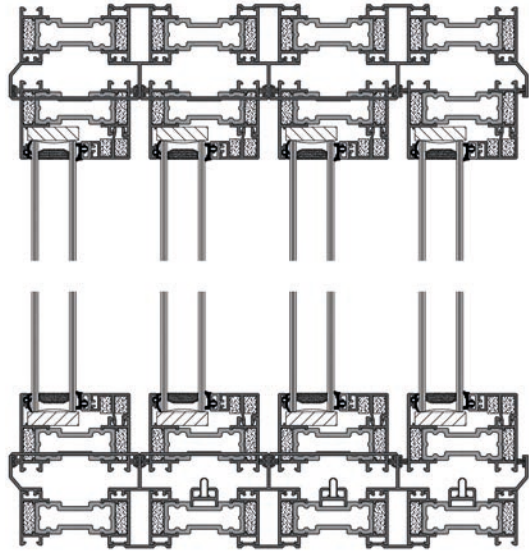
- Quad Track:** from 4 to 14 panels
- Triple Track:** from 3 to 14 panels
- Dual Track:** from 2 to 6 panels

RT7050 AW Classic profile shown.
Raised track (Quad) fitted with cill

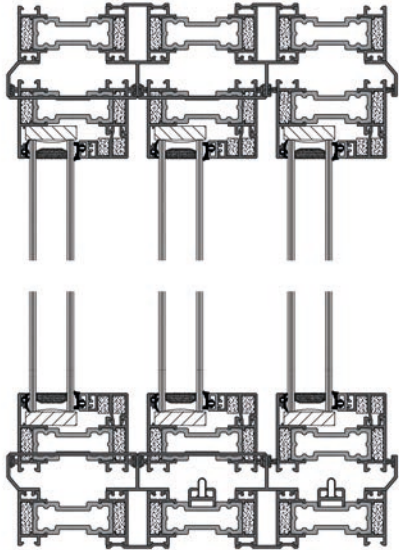


www.rhinowindows.com

LEARN MORE 



Elevation View

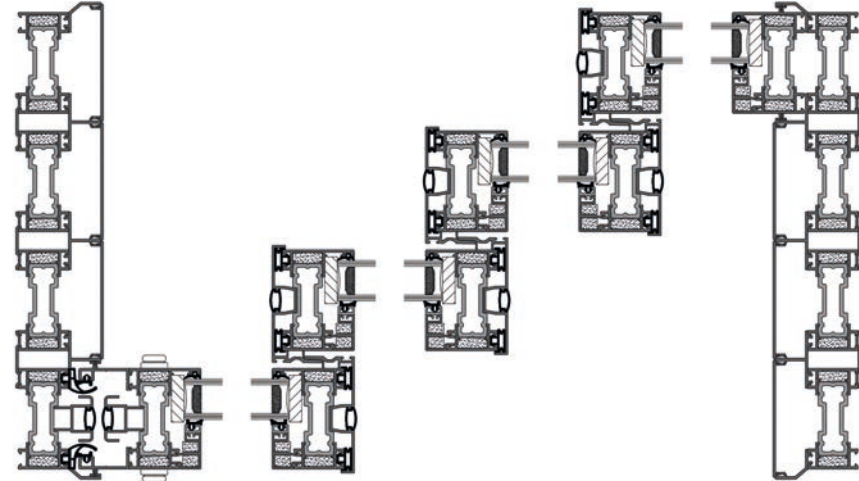


Elevation View



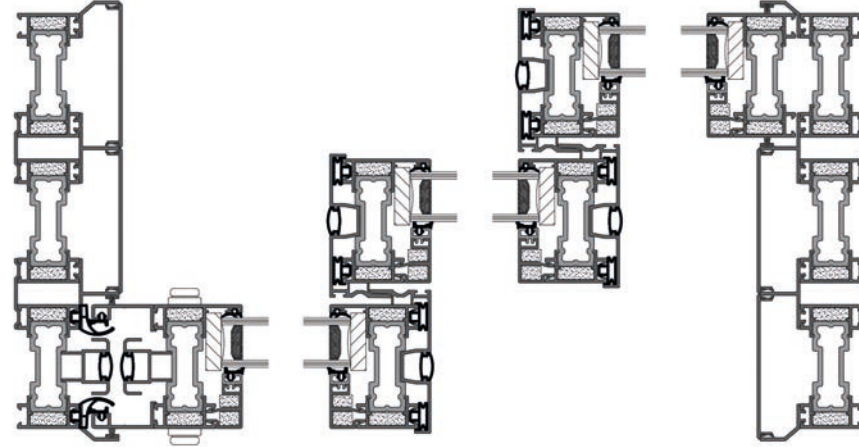
Elevation View

QUAD TRACK - 4 panel example - elevation & plan views shown



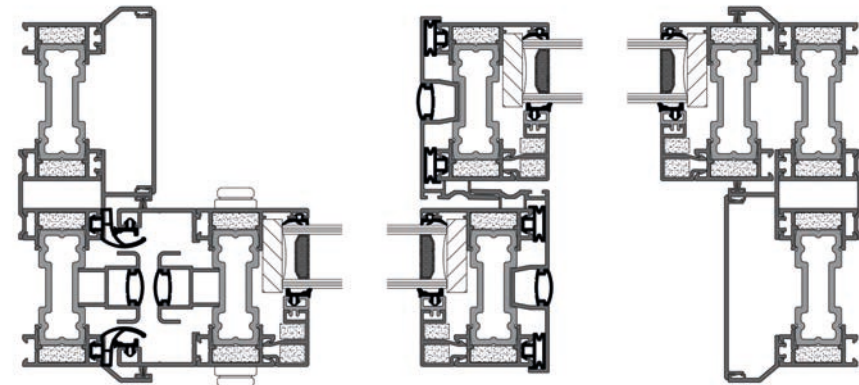
Plan View

TRIPLE TRACK - 3 panel example - elevation & plan views shown



Plan View

DOUBLE TRACK - 2 panel example - elevation & plan views shown



Plan View

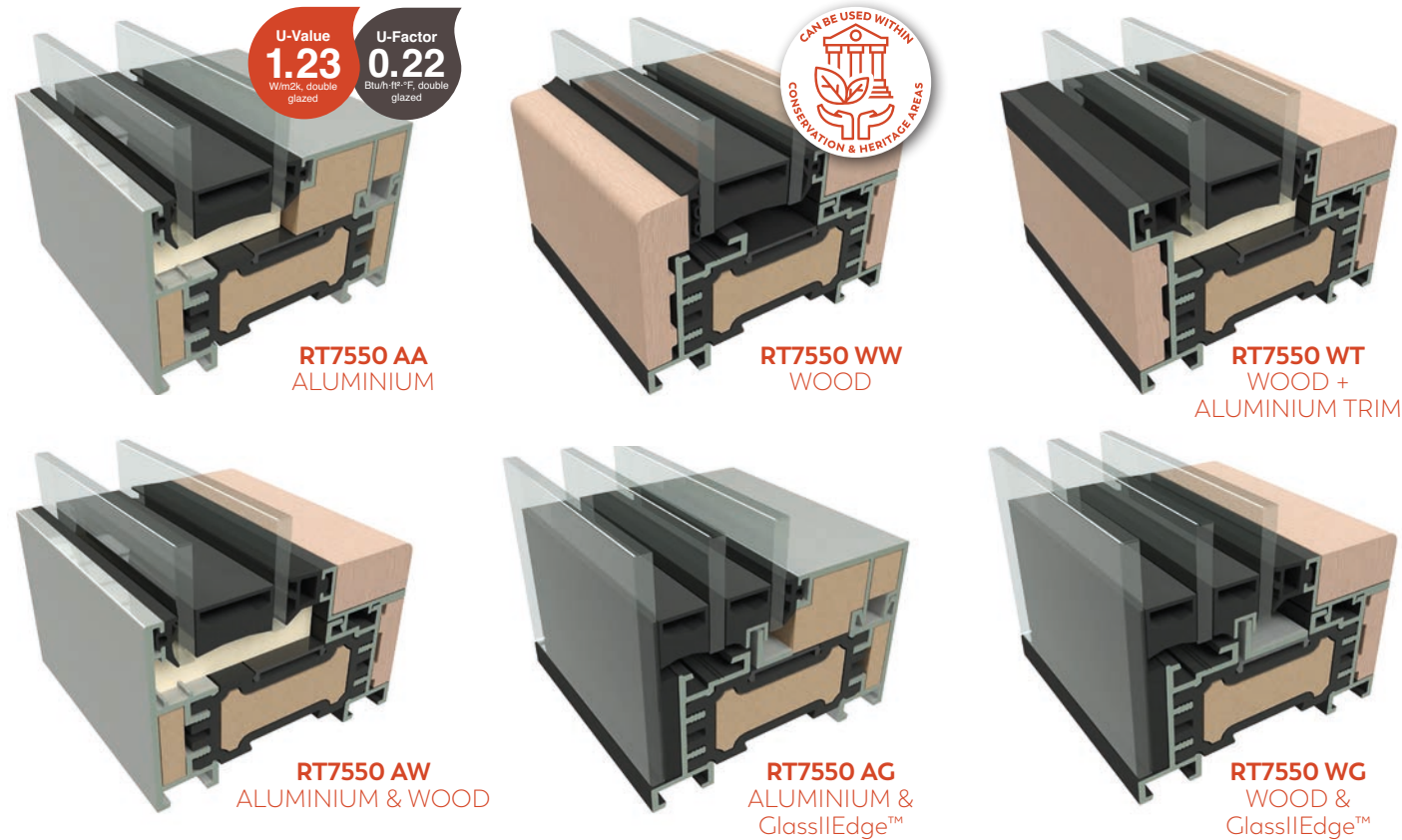
COMING SOON

Upcoming NEW Sliding Door Systems for 2024

RT7550 Signature *Ideal replacement system - Upgrade*

Material options: Aluminium (AA), Hardwood (WW), Hardwood/Aluminium Trim (WT), Aluminium/Hardwood (AW), Aluminium/Glass2Edge (AG) & Hardwood/Glass2Edge (WG)

RT7550 offers further material options to the line-up, improved thermal values (even larger thermal breaks) and matching products across the system; Bifold Doors, Sliding Doors, Casement Windows and Vertical Sliding Windows.



Features: 75mm deep, 50mm slim frame. Great thermal values, Ideal replacement upgrade. Includes **Winsul8 Technology** (GFRC Insulated 55mm core) to profiles and aluminium tracks. Six material options. Wide glazing panels, smooth action, easy to use. Flush external aluminium face.

Track options: Available as **Double** (2), **Triple** (3) and **Quad** (4) track versions.

Threshold options: Flush, raised, with or without cills. Internal and external weather rebates.

Further options: Pocket door. Cill (75mm projection), fits all track options.

Profile / Track specification:

Sash Depth (each) **75mm / 2 61/64 in**
 Sash Width **50mm / 1 31/32 in**
 Jamb Width **35mm / 1 3/8 in**

Interlock Profile **50mm / 1 31/32 in**
 Double Track (Depth) **185mm / 7 9/32 in**
 Triple Track (Depth) **250mm / 9 27/32 in**
 Quad Track (Depth) **335mm / 13 3/16 in**

RT9050 Supreme *Ideal new build system*

Material options: Aluminium (AA), Hardwood (WW), Hardwood/Aluminium Trim (WT), Aluminium/Hardwood (AW), Aluminium/Glass2Edge (AG) & Hardwood/Glass2Edge (WG)

RT9050 is very similar to the RT7550, but with it's increased depth to 90mm it accommodates an even larger thermal break, resulting in better thermal values and achieves PASSIVHAUS.

Features: 90mm deep, 50mm slim frame. Fantastic thermal values, Ideal new build system. Includes **Winsul8 Technology** (GFRC Insulated 70mm core) to profiles and aluminium tracks. Six material options. Wide glazing panels, smooth action, easy to use. Flush external aluminium face.

Track options: Available as **Double** (2), **Triple** (3) and **Quad** (4) track versions.

Threshold options: Flush, raised, with or without cills. Internal and external weather rebates.

Further options: Pocket door. Cill (75mm projection), fits all track options.

Profile / Track specification:

Sash Depth (each) **90mm / 3 35/64 in**
 Sash Width **50mm / 1 31/32 in**
 Jamb Width **35mm / 1 3/8 in**

Interlock Profile **50mm / 1 31/32 in**
 Double Track (Depth) **230mm / 9 1/16 in**
 Triple Track (Depth) **295mm / 11 39/64 in**
 Quad Track (Depth) .. **380mm / 14 61/64 in**

The following two systems are **UNIQUE** in manufacture and material. They are also the **FIRST GFRC fenestration products available within Europe***. These unique eco friendly systems **PRODUCE ASTOUNDING THERMAL RESULTS**, surpassing **PASSIVHAUS** requirements.

RT7540 Ecotrusion *Eco-friendly replacement system*

RT9040 Ultra-Ecotrusion *Eco-friendly new build*

Material: Glass Fibre Reinforced Composite (GFRC).

Features: GFRC pultruded profile throughout, Eco friendly manufacture & hugely thermally efficient (keeps energy bills low). 75 or 90mm deep (each panel) for improved thermal properties. Flush external face, wide glazing panels, smooth action, easy to use. Ultra slim 40mm frame. GFRC Insulated aluminium tracks (flush, raised, with or without cills).

Track options: **Double** (2), **Triple** (3) and **Quad** (4) track.

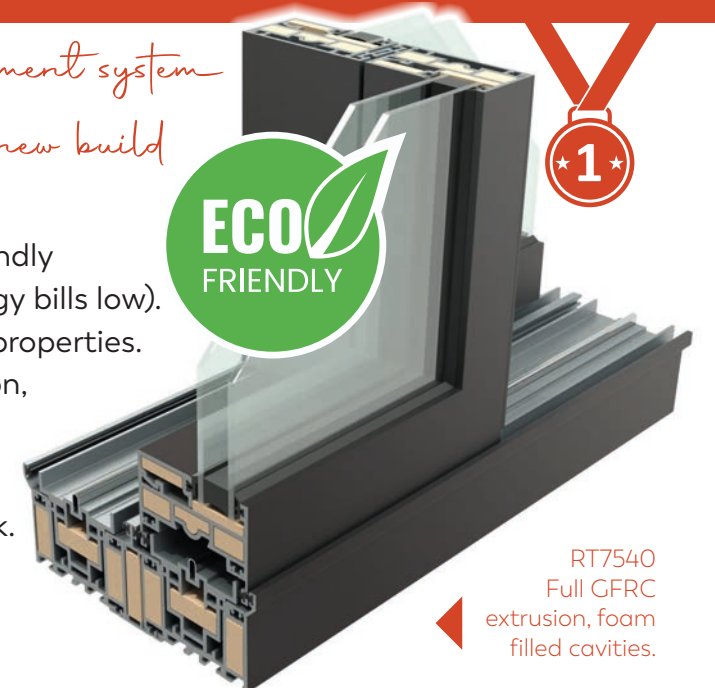
Threshold options: Flush, raised, with or without cills. Internal and external weather Rebates.

Further options: Pocket door. Cill (75mm projection).

Profile / Track specification:

Sash Depth (7540) **75mm / 2 61/64 in**
 Sash Width (7540) **40mm / 1 37/64 in**
 Sash Depth (9040) **90mm / 3 35/64 in**
 Sash Width (9040) **50mm / 1 31/32 in**
 Jamb Width **35mm / 1 3/8 in**
 Interlock Profile **40mm / 1 37/64 in**

Double Track (7540) **185mm / 7 9/32 in**
 Triple Track (7540) **250mm / 9 27/32 in**
 Quad Track (7540) **335mm / 13 3/16 in**
 Double Track (9040) **230mm / 9 1/16 in**
 Triple Track (9040) **295mm / 11 39/64 in**
 Quad Track (9040) **380mm / 14 61/64 in**





Where Excellence Meets Innovation

At Rhino Windows, our passion for perfection is reflected in our meticulously crafted door and window systems. With a legacy of excellence, we are at the forefront of the fenestration industry, offering unparalleled quality, energy efficiency, and cutting-edge design.

Rhino Windows takes pride in designing, manufacturing, and supplying a comprehensive range of door and window systems. Our systems are of high-quality, energy efficiency and performance products to cater to the diverse needs of our clients.

Elevate your space with our energy efficient doors and window systems.



BIFOLD
DOORS

BIFOLD
WINDOWS

MULTI
SLIDING
DOORS

FLUSH
CASEMENT
WINDOWS

VERTICAL
SLIDING
WINDOWS



Rhino Windows

www.rhinowindows.com • sales@rhinowindows.com



Rhino Windows Sliding Door System RT7050, Rev 08/12/2023

